



## Alternator

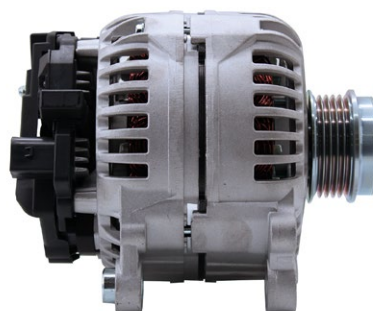
The alternator is that component of the car's electrical circuit that **converts mechanical movement into electrical energy** and thus recharges the battery. It is driven by the engine itself when it is switched on, via the service belt. Since the alternator generates alternating current but the battery can only store direct current, there is a diode plate inside it with the task of transforming the current from alternating to direct current.

It is not uncommon for an alternator to fail, particularly on the diode plate, which is easily damaged by **polarity reversals** or **unstabilised voltage peaks**.

## Our range

Over **1,000** active and available references.

All our products have passed **scrupulous quality and durability tests** before being put on the market.



MeatsDoria **5510005**  
Hoffer Products **H5510005**

## Starter motor

This electrical component is responsible - as the name suggests - for **starting the engine, driving the crankshaft** until ignition occurs and the heat engine is then autonomous. The heat engine is artificially driven by engaging a gear wheel with the flywheel gear. As soon as the heat engine is started, the gear wheel disengages and returns to its seat.

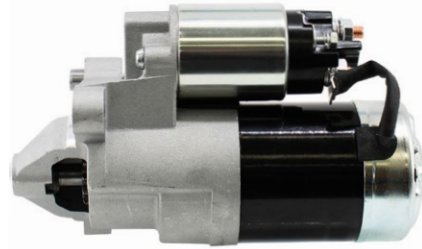
Damage to the starter motor can occur because **the gear wheel is damaged**, because **the armature inside it is centrifuged**, or because of **short circuits** and **other electrical problems**.



## Our range

Over **800** active and available references.

All our products have passed **scrupulous quality and durability tests** before being put on the market.

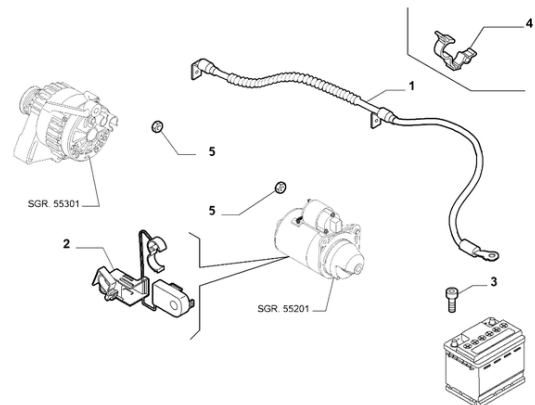


Meat&Doria **5035201**  
Hoffer Products **H5035201**

## O.E. connector 46554401 | Meat&Doria 52382

**Caution!** For some starters, the connection of pole 30 (direct battery) and pole 50 (ignition switch) are coaxial, so they are locked simultaneously in a single operation.

Meat&Doria **52382**  
Hoffer Products **52382**



### Problem description

The contact with pole 50 is the most complex as it has an eyelet held in place by a spring washer. This solution breaks down when a lot of dirt and oxide accumulates between the surfaces, causing false contacts, sparks and discontinuity of operation.

### Consequences of failure to replace or inspect the component

Starting discontinuity and vehicle standstill.

Sustained electromagnet overheating with loss of insulation and partial sticking of the same up to irreparable damage such as centrifugation of the starter motor.

Starting discontinuity and overheating electromagnet, motor, battery stress.

Overheating electromagnet with loss of insulation, damage to moving electromagnet contacts with partial sticking of the contacts.

### Codes attended

#### Bosch

0001172401  
0001172400  
0001138012

#### Valeo

D6G1  
D6G32  
D6G321  
D7E52

#### Hitachi

S114-906/905, 943

